

---

---

---

---

---

---

---

---



---

---

---

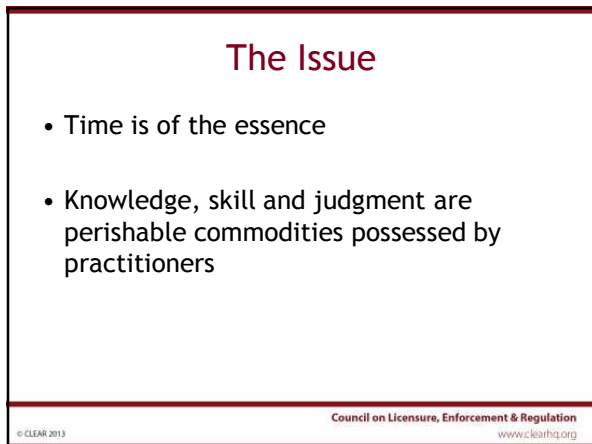
---

---

---

---

---



---

---

---

---

---

---

---

---

**The Issue con't**

- Knowledge can be maintained through study
- Maintaining skill and judgment generally requires practical, hands-on experience

Council on Licensure, Enforcement & Regulation  
www.clearhq.org

---

---

---

---

---

---

---

---

**The Issue con't**

- How long is too long?
- How should a regulator approach the issue of re-entry to practice, in terms of assessing experience after "x" amount of time?

Council on Licensure, Enforcement & Regulation  
www.clearhq.org

---

---

---

---

---

---

---

---

**Up for discussion...**

- How long can a practitioner go without practicing before a formal reassessment of skills / judgment is required at the time of re-licensing?
- How is that time period determined and justified?
- What are the risks?
- Have there been legal challenges?

Council on Licensure, Enforcement & Regulation  
www.clearhq.org

---

---

---

---

---

---

---

---

### Speaker Contact Information

Facilitator:

Bruce G. Matthews

Deputy Registrar, Regulatory Compliance  
Real Estate Council of Ontario

T: 416-207-5149

E: bruce.matthews@reco.on.ca

---

---

---

---

---

---

---

---

© CLEAR 2013

Council on Licensure, Enforcement & Regulation  
www.clearhq.org